

MasterLife WP 1000

Integral crystalline waterproofing admixture in powder form, for the production of durable, extremely watertight self-healing concrete and for sealing the capillaries in the structure of the cement paste (According to EN 934-2 Table 9).

DESCRIPTION AND WHERE TO USE

MasterLife WP 1000 is a specific integral crystalline waterproofing admixture to be added to the concrete mix, to impart waterproofing properties due to active chemicals that react with the moisture in fresh concrete to generate a non-soluble crystalline formation throughout the capillary pores of cement matrix.

MasterLife WP 1000 consists of Portland cement, selected filler and fine sand and various active, proprietary chemicals that react with water and moisture higher than 95% closing and sealing capillary porosity and micro-cracks lower than 0,4 mm.

The use of MasterLife WP 1000 is advised where a waterproof concrete is required, durable to deterioration due to harsh environmental conditions that resists to hydrostatic pressure from either positive or negative surface of the concrete slabs.

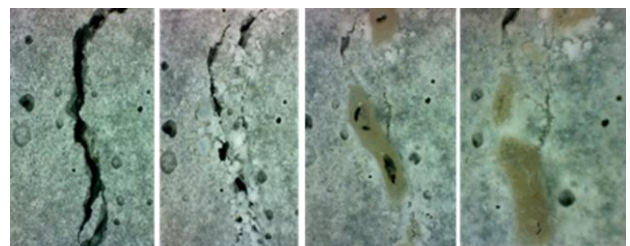
TYPICAL APPLICATIONS

The use of MasterLife WP 1000 is recommended in the following applications:

- reservoirs of potable and non-potable water
- desalination plants
- swimming pools
- underwater structures
- depurators
- foundation work, slabs and retaining walls, scrape-towers
- residential and non-residential parking structures
- dams and dykes
- harbors and docks
- sewers, tunnels and canals
- tunnels and subway systems
- precast heavy industry



Self-healing ability

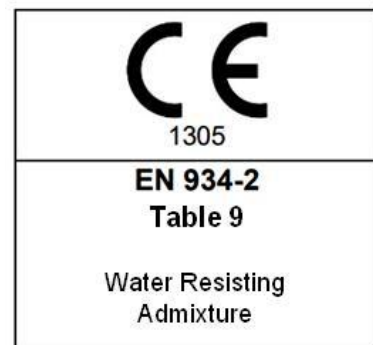


Initial crack,
in contact
with water

7 days

28 days

60 days



BENEFITS

MasterLife WP 1000 becomes an integral part of the cement matrix giving waterproofing properties to concrete thanks to a crystalline formation throughout the capillary pores. Reaction proceeds in water since the early stages from 7 to 28 days and on, with the closing and sealing of micro-cracks, reducing permeability and improving the durability of concrete.

MasterLife WP 1000 does not affect the setting time of the concrete mixture, it does not affect the workability and pumpability and also does not give sticky effects. Compressive strengths are expected to remain unaffected, or be slightly increased compared to reference concrete. Thus the concrete mix remains exactly as originally designed, retaining all workability, pumpability and mechanical properties.

MasterLife WP 1000

Integral crystalline waterproofing admixture in powder form, for the production of durable, extremely watertight self-healing concrete and for sealing the capillaries in the structure of the cement paste (According to EN 934-2 Table 9).

DOSAGE

The dosage of MasterLife WP 1000 can range from 0,8 to 2% by cement weight.

The optimum dosage is 0,8 to 1% by cement weight. In this dosage has been proved that we are receiving the full waterproofing properties due to active chemicals that react with the moisture in fresh concrete to generate a non-soluble crystalline formation throughout the capillary

pores of cement matrix.

Other dosages may be recommended in special cases according to specific job site conditions. In such cases please consult our Master Builders Solutions Technical Support Department.

Technical Information

Form	Grey powder
Un-compacted Bulk Density (g/cm ³)	0,670 ~ 0,870
Density (g/cm ³)	2,670 ~ 2,870

DIRECTIONS FOR USE

- A) MasterLife WP 1000 can be loaded preferably during the aggregates load on the loading belt in the ready-mix plant. We advise to mix for 5 min. in order to ensure that a homogeneous concrete has been achieved. Avoid the addition on premixed-wet concrete.
- B) MasterLife WP 1000 can also be added on site (as slurry mix) according to the following procedure:
- Determine the optimum dosage per m³ of concrete according to the cement content of the concrete mix.
 - On site prepare a slurry mixture by mixing MasterLife WP 1000 with water using a power drill machine.
 - Add 0,8 ~ 1,0 lit of water for every kg of MasterLife WP 1000.
 - Mix until a homogeneous smooth slurry mixture - free of lumps is obtained.
 - The slurry must be inserted in the concrete truck and mixes for at least 5 minutes in order to ensure that a homogeneous dispersion in the concrete has been achieved.



Important notice:

Do not add the MasterLife WP 1000 as powder on premixed – wet concrete.

COMPATIBILITY

MasterLife WP 1000 is compatible with all admixtures of MasterPozzolith, MasterRheobuild, MasterGlenium, MasterEase and MasterSure series.

PACKAGING AND STORAGE

MasterLife WP 1000 is available in 20 kg plastic bags. Store the product in a dry and sheltered place. Do not use the product if bag is damaged. If stored in unopened bags the shelf life is 12 months.

MasterLife WP 1000

Integral crystalline waterproofing admixture in powder form, for the production of durable, extremely watertight self-healing concrete and for sealing the capillaries in the structure of the cement paste (According to EN 934-2 Table 9).

SAFETY INSTRUCTION

When using the product, it is recommended to use gloves to protect the hands, goggles to protect the eyes and a mask to prevent inhalation. For further safety instructions consult the Safety Data Sheet (SDS).

Από τις 16/12/1992 η Master Builders Solutions Italia Spa λειτουργεί σε καθεστώς πιστοποιημένου συστήματος ποιότητας σύμφωνα με το πρότυπο UNI-EN ISO 9001. Το σύστημα διαχείρισης περιβάλλοντος είναι επίσης πιστοποιημένο σύμφωνα με το πρότυπο UNI EN ISO 14001 και το σύστημα της ασφαλούς διαχείρισης είναι πιστοποιημένο σύμφωνα με το Πρότυπο UNI ISO 45001.

Master Builders Solutions Italia Spa

Via Vicinale delle Corti, 21 – 31100 Treviso – Italy

T +39 0422 429200 F +39 0422 421802

www.master-builders-solutions.com/it-it

e-mail: infomac@mbcc-group.com

Για περισσότερες πληροφορίες συμβουλευτείτε τον τεχνικό της περιοχής σας της Master Builders Solutions Italia Spa

Οι τεχνικές υποδείξεις που μπορεί να παρέχονται, προφορικά ή γραπτά, σχετικά με τον τρόπο χρήσης ή τη χρήση των προϊόντων μας, ανταποκρίνονται στην παρούσα κατάσταση της επιστημονικής και πρακτικής μας γνώσης και δεν συνεπάγονται τη λήψη οποιασδήποτε εγγύησης ή/και την ευθύνη για το τελικό αποτέλεσμα των εργασιών με τη χρήση των προϊόντων μας. Δεν εξαιρούν, κατά συνέπεια, τον πελάτη από το αποκλειστικό καθήκον και την ευθύνη να ελέγχει την καταλληλότητα των προϊόντων μας για τη χρήση και τους σκοπούς για τους οποίους προορίζονται.

Η παρούσα έκδοση ακυρώνει και αντικαθιστά όλες τις προηγούμενες.

Μάρτιος 2021